



# Finishing Product Launch Lisbon

# Graco 1K Fluid Packages



Informer

ProControl 1KE

# 1K Fluid Packages



- **Monitor** with Informer

- View flow rates
- Get usage reports



- **Manage** with ProControl 1KE

- Regulate fluids
- Lock settings
- Get usage reports



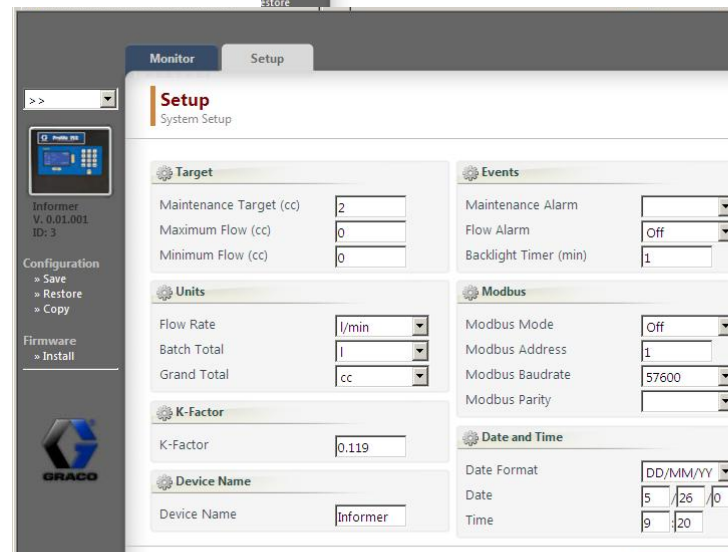
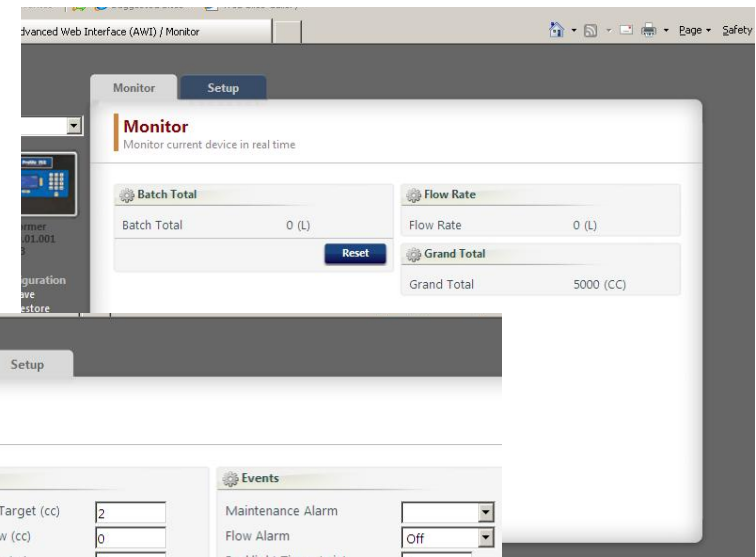
# Easy Installation

- Informer and ProControl 1KE mount easily to the wall
  - Uses same bracket as 2KS/2KE
  - Power (100 – 240 VAC) in hazardous area with Intrinsically Safe Power or outside with non-IS Power.
  - Can be purchased with G3000 Meter
  - Can be optionally used with:
    - G3000HR
    - S3000
    - G250
    - HG6000
    - Coriolis



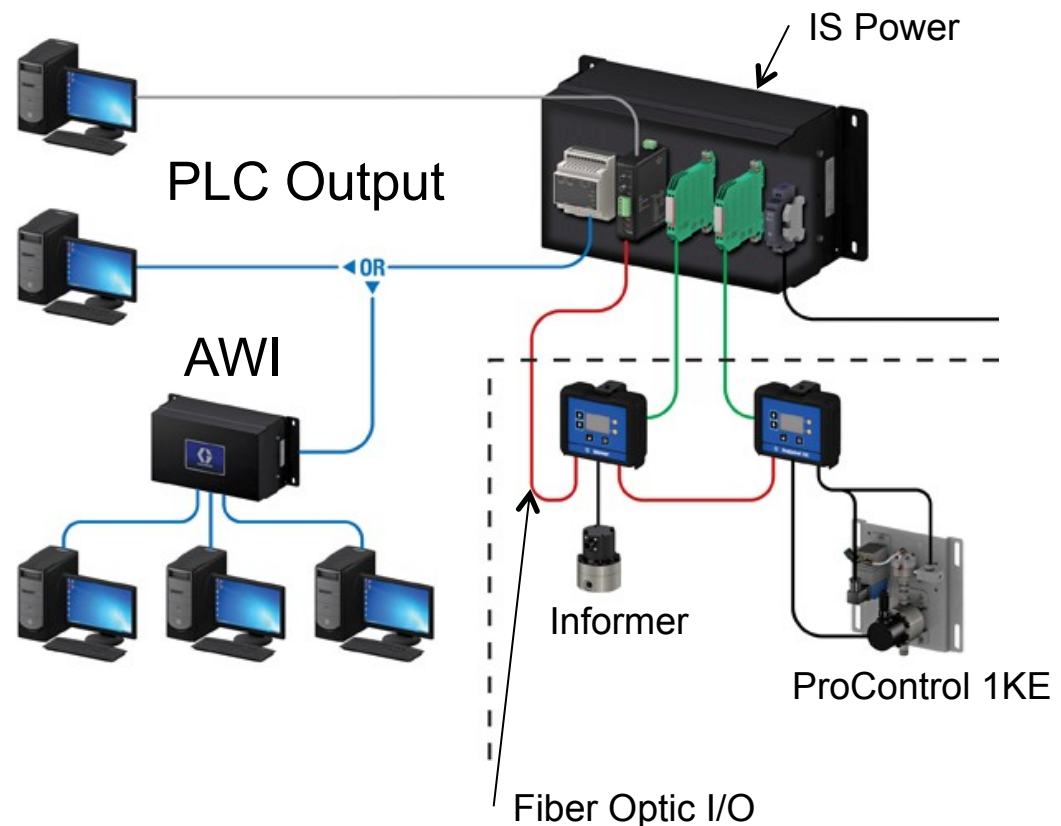
# Data Collection

- Job Totals and Grand Totals easy to get off screen
- PLC communications through ModBus
- Connect up to 30 Informers or 1KEs to Advanced Web Interface
- Data available includes
  - Job Totals with date and time
  - Alarm Logs



# Product Networking

- Easy to collect data
  - Products can be chained together with single output
- Connect to
  - PLC for automated process integration
  - AWI for access to all data from the office





# Informer



# Monitor with Informer

- Tracks use of fluids measured through a fluid meter
- Flow rate display used to set up and monitor spray guns
- Maintenance alarm
  - Alarm output when target volume is reached
- Applications include
  - Data collection for environmental reports
  - Material use for accurate part costing
  - Data for continuous process improvement
  - Flow data for gun setup
  - Alerts when gun tips are clogging





# ProControl 1KE



# Manage with ProControl 1KE



- Issue

- Painters adjust manual fluid regulator to suit the way they paint
- Painters adjust atomizing air pressure to suit the way they paint
- These adjustments often lead to reductions in transfer efficiencies  
→wasted paint

- Solution

- ProControl 1KE
  - Can electronically maintain
    - Fluid Pressure
    - Atomizing or fan air pressure
  - Fluid or air pressure adjustments PIN protected
  - Can improve transfer efficiency by up to 10%
  - Reduces paint waste



# Manage with ProControl 1KE



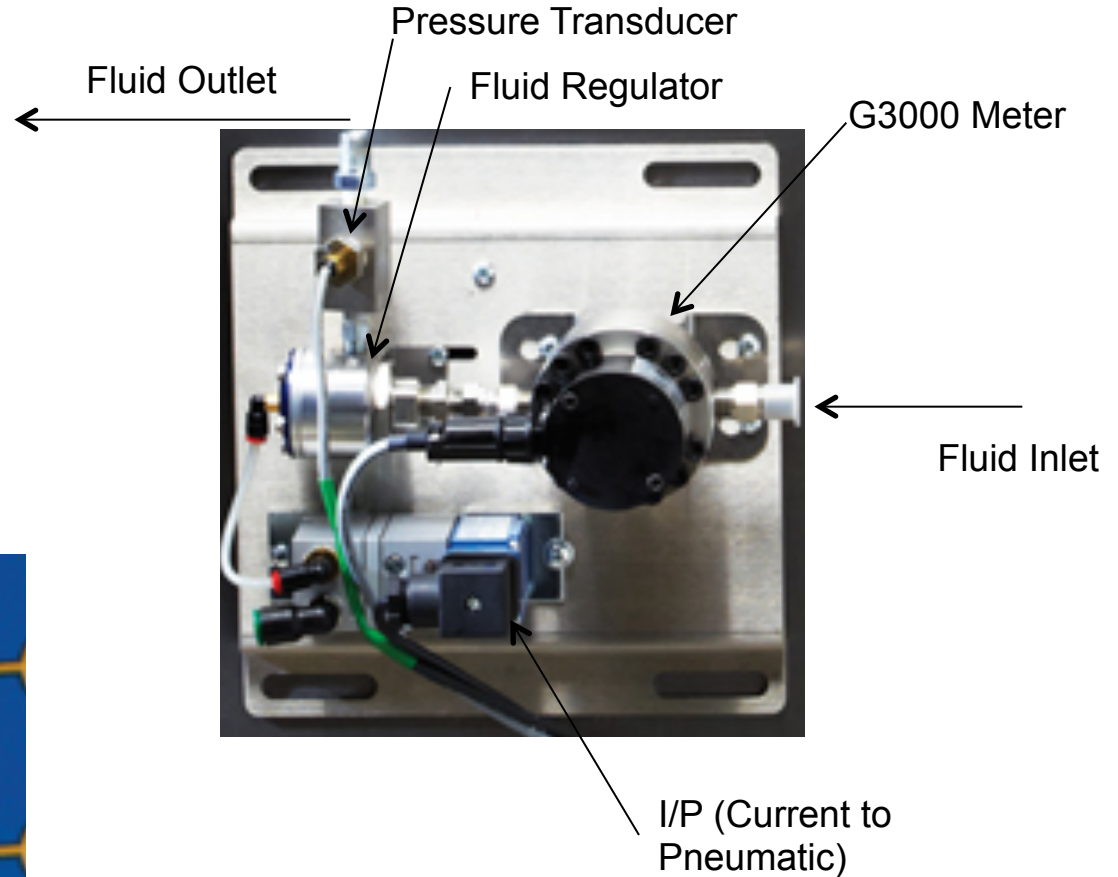
- Available Configurations
  - Fluid control
    - Modulates fluid pressure to set and lock flow setting
    - Uses flow meter to monitor flow rate and log material use
  - Air Control
    - Modulates air pressure to maintain consistent spray pattern
- Simple Operation
  - Operator can increase or decrease regulated fluid or air pressure to achieve optimal spray pattern
  - Settings can be locked with PIN access to maintain consistent production across painters.
- Data Collection
  - Reports the same material use data as Informer



# 1KE Hardware Identification - Fluid



- Fluid Enters at inlet through meter
- I/P converts signal from Display Module and opens fluid regulator
- Readings from pressure transducer and meter are displayed



# 1KE Hardware – Air Control

- 1KE Display Module opens I/P to desired air pressure for Fan Air or Atomizing air control.
- Pressure transducer can be added to see outlet air pressure
- Meter can be added to track liquid flow rate and material use



# Product Capability Comparison

	Flow Rate Display	Material Use	Maintenance	AWI	PLC	Flow Regulation	Pressure Display	Air Regulation
Informer	Std	Std	Std	Opt	Opt			
ProControl 1KE Air	Opt	Opt	Opt	Opt	Opt	Opt	Opt	Std
ProControl 1KE Fluid	Std	Std	Std	Opt	Opt	Std	Opt	



# Product Configurations



Saleable Kit No.	Informer	ProControl 1KE	Power Type			G3000 Meter	Fluid Control Type			
			No Power	AC (no barrier)	AC (with barrier)		Fluid Control	Pressure Transducer	Fluid Regulator	Air Control
24L073	•		•							
24L074	•		•			•				
24L075	•			•						
24L076	•			•		•				
24L077	•				•					
24L078	•				•	•				
24L083		•	•							
24L084		•		•			•		•	
24L085		•			•		•		•	
24P592		•		•			•			
24P593		•			•		•			
24L086		•		•		•	•		•	
24L087		•			•	•	•		•	
24P594		•		•		•	•			
24P595		•			•	•	•			
24L088		•		•		•	•	•		
24L089		•			•	•	•	•		
24P596		•		•			•	•	•	
24P597		•			•		•	•	•	
24L090		•		•						•
24L091		•			•					•

# Marketing Tools



- Brochures
- Presentations
- Images
- Commercial Video's
- Service Video's
- Instruction Video's
- Instruction Manuals

